

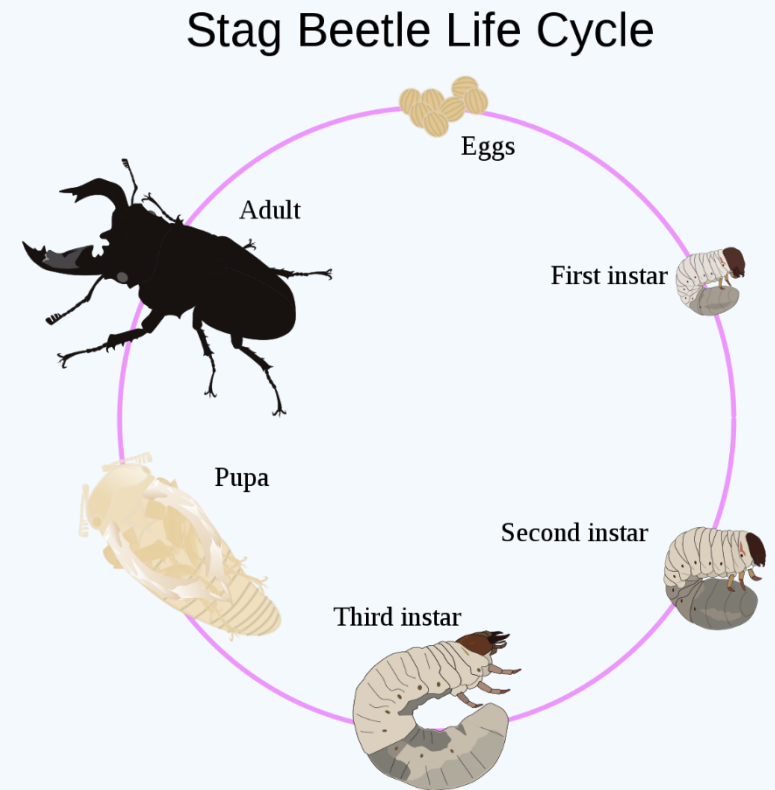


Stag Beetles

Writing Home Learning
Wb 8/6/20

The Life Cycle of a Stag Beetle

- A female Stag Beetle lays eggs in some deadwood where she will dig underground to lay up to 21 eggs.
- Eggs are laid in the summer and hatch into larvae.
- They will eat deadwood and shed their skin up to 5 times.
- They will keep growing until they are large enough to make a cocoon – this can take 3 to 5 years.
- The larvae will make a cocoon and emerge as an adult in May.



What do Stag Beetles look like?

- Stag Beetles have shiny black heads and thoraxes (chests) and brown wing cases.
- They have large mandibles that look like antlers.
- Male Stag Beetles use their mandibles to fight off predators and competition for the female stag beetles.
- Adult female Stag Beetles can be up to 5cm long.
- Adult male Stag Beetles can be up to 7cm long.



What do Stag Beetles eat?

- Adult Stag Beetles eat tree sap and rotting wood.
- Adult Stag Beetles use their feathery tongue to take moisture and energy from rotting wood and tree sap.
- Larvae (before they go into a cocoon and become a stag beetle) munch on dead wood underground.





Most Stag Beetles live for only a few weeks after emerging as an adult, with many dying during the winter. A few can survive if they find somewhere nice and warm to live, like a compost heap.

Where do Stag Beetles live?



- Stag Beetles live in southern England.
- They prefer oak woodland (like forests) but some will live in built up areas such as parks and gardens.
- They like to have plenty of tree cover to shelter them.

Stag Beetle Fun Facts 😊

- There are 1200 different species of Stag Beetle.
- Stag Beetles have wings but rarely fly.
- Stag Beetles are now rare in Britain because it has lost a lot of it's habitat.
- Stag Beetles look fierce but are rarely harmful to humans.

