



CLA joint strategy

Monday 16 October 2023

Believe, Inspire, Achieve

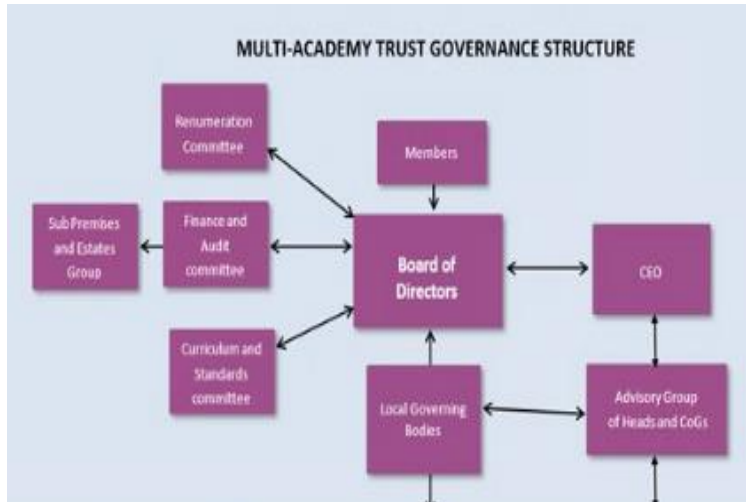


Introductions - who we are



Believe, Inspire, Achieve

Our Local Governing Body



Believe, Inspire, Achieve

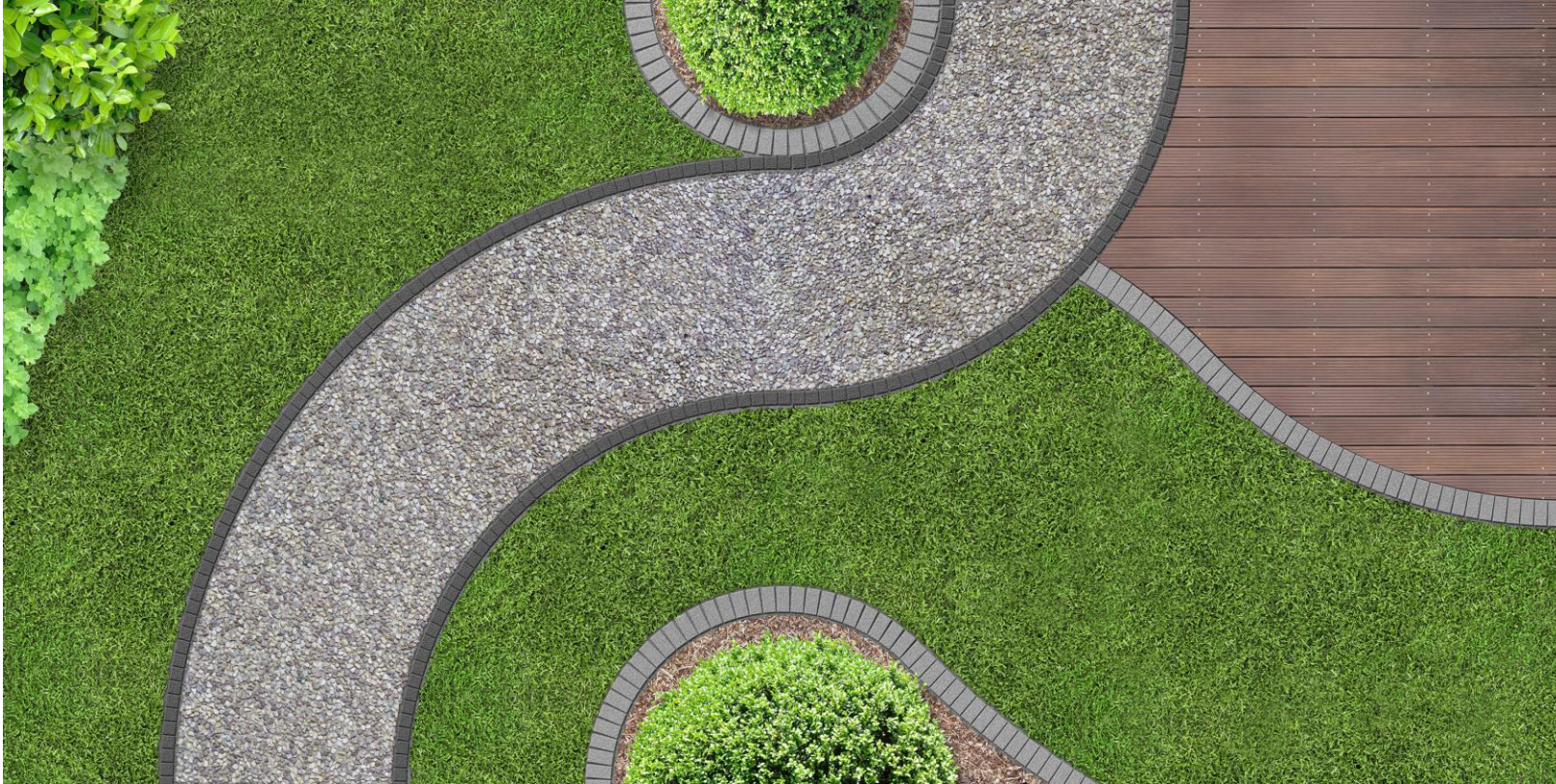
This evening we wanted to share with you

- ▶ What we are trying to work towards for our children
- ▶ Where we've been, where we are now, and how we decide where to go
- ▶ Things that affect our schools differently to others
- ▶ How we can work together for our children



Believe, Inspire, Achieve

Where the school has been



Believe, Inspire, Achieve

The national picture for schools

- ▶ Curriculum
- ▶ Phonics
- ▶ Multiplication tables check
- ▶ Reception baseline assessment
- ▶ 'catch up' and 'recovery'
- ▶ Digital strategy
- ▶ Senior Mental Health Lead
- ▶ Attendance
- ▶ School Day Length
- ▶ Layers of Safeguarding



Believe, Inspire, Achieve

Part of Portsmouth, part of a Multi Academy Trust

- ▶ Portsmouth Educational Improvement Area ('levelling up')
- ▶ Restorative approach across the city
- ▶ Health and Social Care changes locally: ND profiling, Family Support Plans
- ▶ Our Trust values:
Achieve More, Challenge Thinking, Shape Futures
- ▶ Trust collective improvement: Oracy, Curriculum Development
- ▶ Trust expertise: we support and challenge each other

Believe, Inspire, Achieve



How does funding affect Court Lane Academies?



Funding stream	How does our funding compare to other schools?
Per pupil	Same for all primary age pupils
Deprivation	Lowest 20% nationally
Prior attainment	Generally, below other schools
English as an additional language	Low
Mobility	Zero
Lump sum	Same for all schools (£129k)
Minimum Per Pupil Level	Juniors 1 of 4 in the LA
Notional SEN (plus 'top up')	Together, 75% of the legal minimum expenditure

Pays for: staff, pensions, insurances, buildings costs, resources, energy, insurance, IT, refuse, 'free' school meals, consultants, swimming (KS2), trips, hedges, furniture, painting....

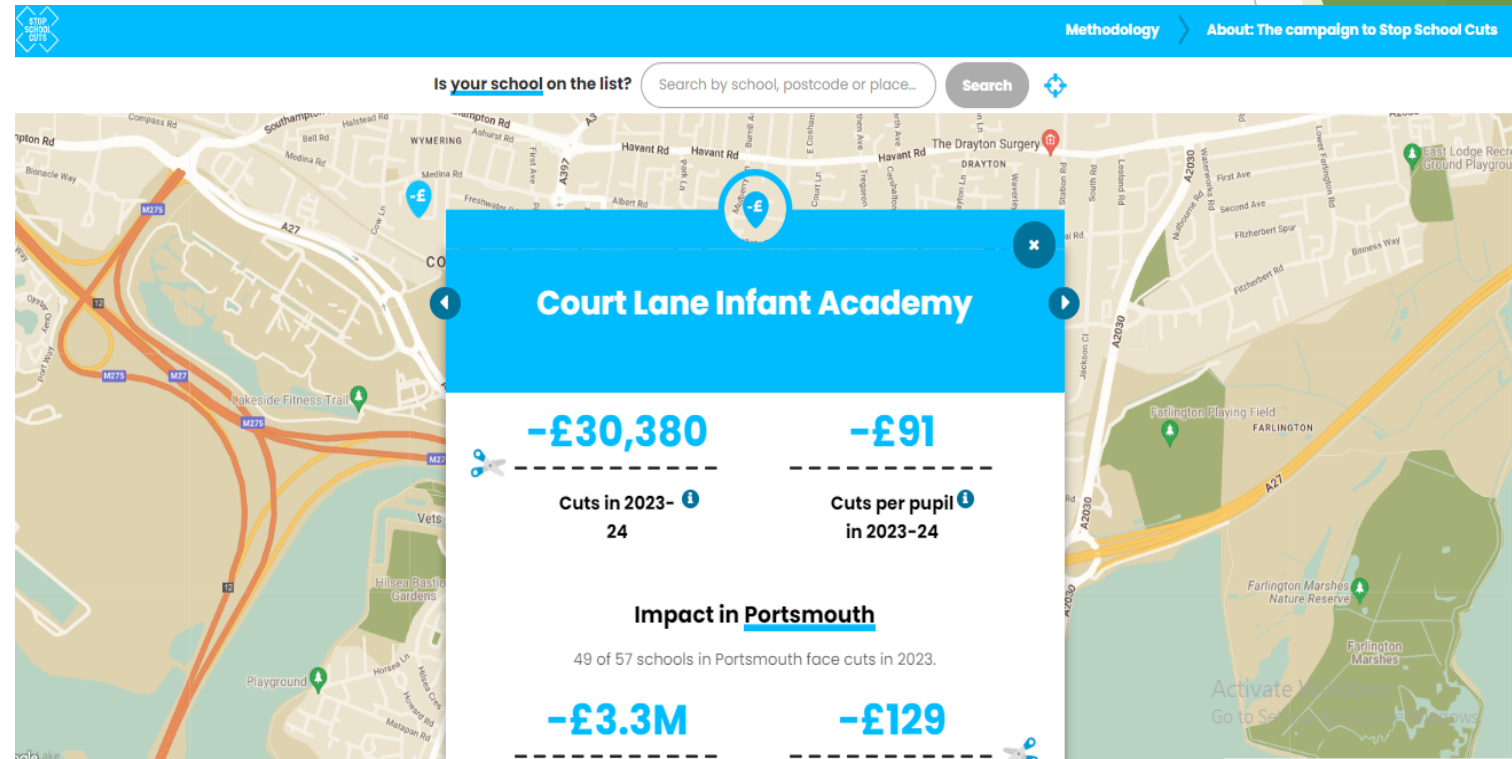
Believe, Inspire, Achieve

How does funding affect Court Lane Academies?

- ▶ Challenging in terms of:
 - ▶ Staffing
 - ▶ Trips and resources
 - ▶ Clubs
 - ▶ Catch up
 - ▶ Fabric of the building

- ▶ Fortunate in terms of:
 - ▶ CLACA
 - ▶ Amazing staff
 - ▶ Supportive families
 - ▶ Kind, enthusiastic children
 - ▶ Our Trust family

Believe, Inspire, Achieve





Court Lane Infant Journey to Excellence (3 years) Curriculum and Our People

Curriculum

- ▶ Our curriculum and planning is responsive to pupils' clearly identified needs
- ▶ Sequential and progressive wider curriculum has positive impact for pupils

Our People

- ▶ Staff are enabled to perform their role to a high standard
- ▶ Pupils are proactive and have ownership of their school experience
- ▶ Parental engagement has a positive impact on their child's education



Believe, Inspire, Achieve



Court Lane Infants the Journey to Excellence (3 years) Infrastructure and Capital



3.1 Digital strategy & EdTech tools for learning



3.2 Maintaining H&S standards and achieving efficiencies



3.3 Buildings and Grounds



Court Lane Juniors the Journey to Excellence (3 years)



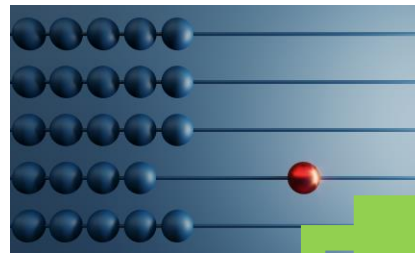
**Exemplary
teaching**



Curriculum



**Excellent
outcomes**



Believe, Inspire, Achieve

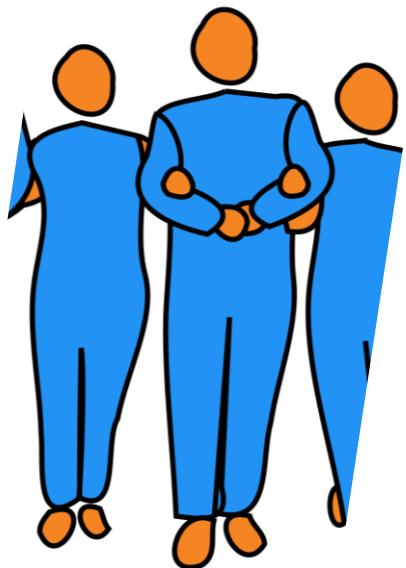


**Enriching and
intentional curriculum**





Court Lane Juniors the Journey to Excellence (3 years)



Our People, Our Learners

All staff developed

Proactive pupils

Parent/carer partnerships



Buildings and Infrastructure



Digital strategy & EdTech tools
for learning



Maintaining H&S standards and
achieving efficiencies



Buildings and Grounds



'How can we help?'



Ready	Arrive on time, ready to learn
Support	Support the school's policies
Read	Read at home
Discuss	Discuss learning (academic and social)
Help	Help to manage anxiety as an everyday and common emotion
Be	Be curious and kind

Believe, Inspire, Achieve

How can we help?

- ▶ What are we missing?
- ▶ What else would you like to see?
- ▶ How can we help you?